

Jenergy Inspections, Inc.



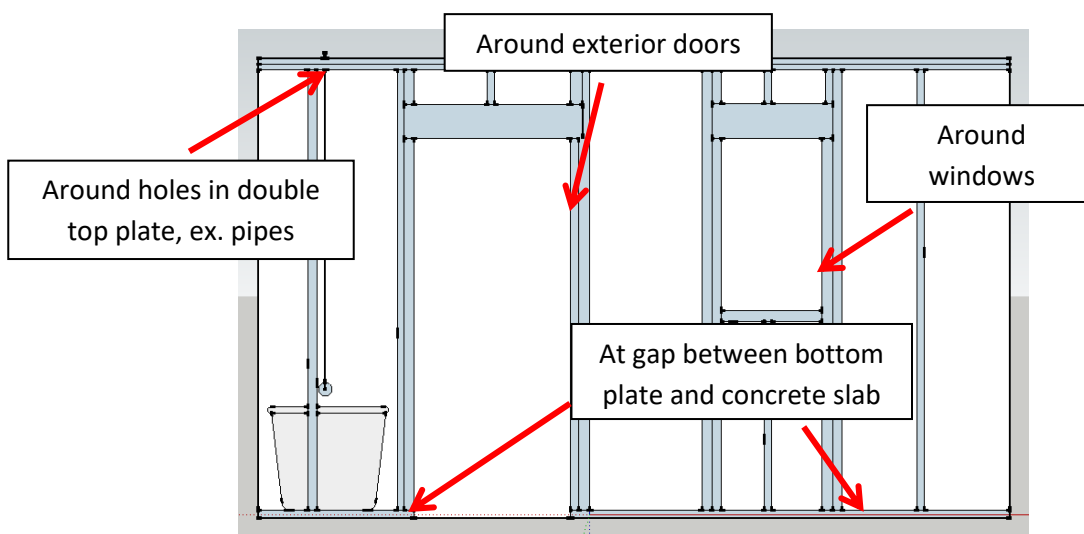
◆ 415 E. Houston Ave., Ste E, Pasadena, TX 77504 ◆ office@jenergyinspections.com
◆ Office - 713-677-0087 ◆ Fax - 832-201-0925

Inspection/ Insulation Information

When to call for inspections:

- **1st/Polyseal inspection** – this means sealing potential air leaks (using caulking, expandable foam or similar materials) in the framing from the bottom plate to the double top plate (refer to drawing for some of the major areas)
- **2nd/Insulation inspection** – after fiberglass, loose-fill or foam insulation has been installed
- **Siding/air barrier inspection (part of 1 or 2)** – usually installed and inspected at either the Polyseal or insulation inspection
- **3rd/Final inspection** – call for this inspection when house is complete. This means after all flooring, lighting fixtures, plumbing fixtures, trim, door hardware, HVAC grills, etc have been installed. The required building pressure and/or duct pressure testing is typically done at this point.

Where to place foam/polyseal:



Requirements for this job:

Attic insulation – **R-38**
(flat ceiling)

Floor insulation – **NA**

Window/glass
door/skylight values, no
higher than **.40** U-
factor/**.25** SHGC

Wall insulation – **R-13**

For more information on sealing and insulation, visit our website at www.jenergyinspections.com

Remember to call for all CITY inspections (electrical, HVAC, structural and plumbing) BEFORE installing sheetrock!